

# DD-20

---

R&D Gummy Machine

Servo depositing, more accurate!

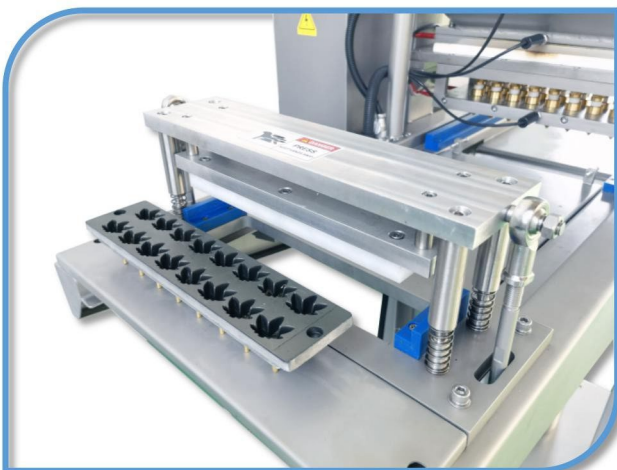


# DD-20

## R&D Gummy Machine

### DD-20

- **Output: 6,000-10,000 gummies/hr.**
- Entry-level operations or experimental and development work in larger operations.
- The DM-20S deposits a high quality, smooth product with a consistent size and shape, and high piece weight accuracy.
- The hygienic, starch-free process is ideal for pharmaceutical products where validation is required.
- Vitamins, minerals, CBD, fibre and energy supplements can be incorporated and can be sugar-free and less than 1% fat.



**2-IN-1 DEPOSITING AND DE-MOLDING**

Integrated System Ensuring  
Production Efficiency



**ONLY NEED 1-2 PERSONS  
ROOM SIZE 100-120 SQ FT**



# DM-20S

## R&D Gummy Machine



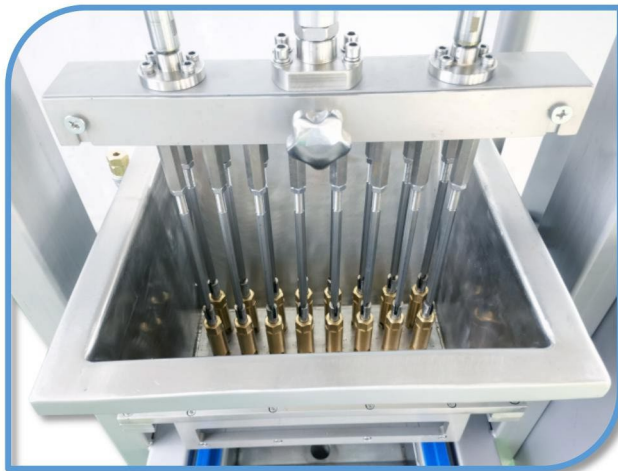
### EASY WASTE TREATMENT

Water Vessel Under The Depositor  
To Collect The Waste



### PEDAL PRESS CONTROL

One Staff Member Is Able To Manage The Whole Process.  
Highly Efficient With Rapid Sartup And Low Scrap Rate



### ELECTRIC HEATED HOPPER

Keep Syrup At Optimum Temperature By a  
Thermostatically-Controlled Heating System.  
25L Hopper With 20 Dosators For a Batch of 12kg  
(Fewer Dosators for Gummy weight over 7g)

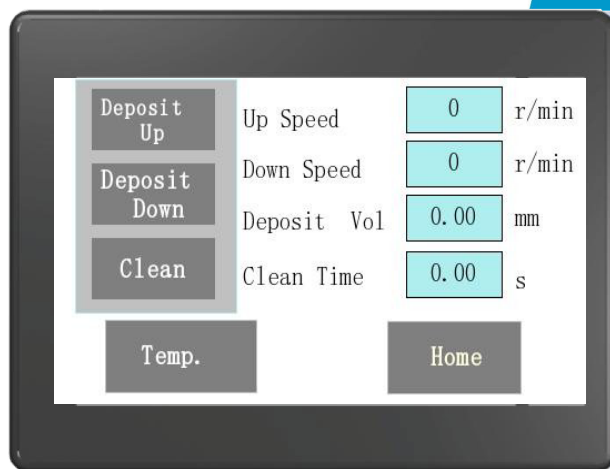


### PLC TOUCH SCREEN

The Deposit Speed and Amount Can Be  
Adjusted on the Touch Screen

# DD-20

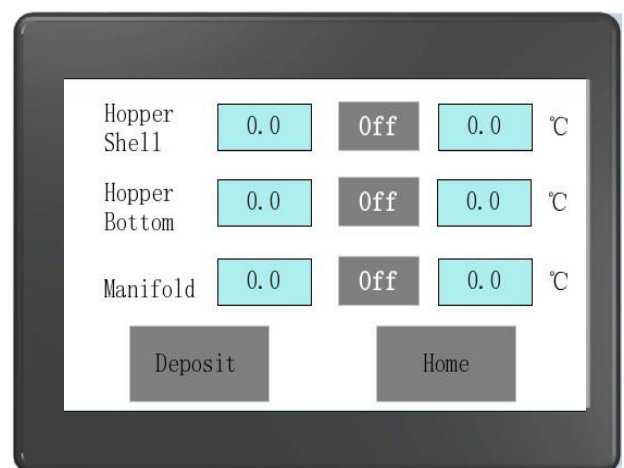
## R&D Gummy Machine



### An advanced user interface:

- Deposit up and down speed can be preset for each cycle
- Deposit volume is adjustable based on gummy size variation
- Last deposit cycle remains in memory to facilitate multiple batches of same formulation
- Cleaning mode retains constant depositing for daily cleaning

- Actual and pre-set temperature are clearly indicated for hopper shell, bottom and manifold
- Servo alarm will display when error occurs
- Operator can resume the batch without loss of parameters



# DD-20

## R&D Gummy Machine

### Feature:

- PLC with touch screen control
- Servo drive depositing with demolding device by pedal press
- Mounted on wheels.
- No compression air required
- Optional second hopper for two colour or centre-filled products
- Rapid startup and low scrap rate
- Easy maintenance.
- Food grade stainless steel material
- Thermostatically controlled heating system



METAL MOLD



SILICON MOLD

Recommended weight per batch: 8-10 kg

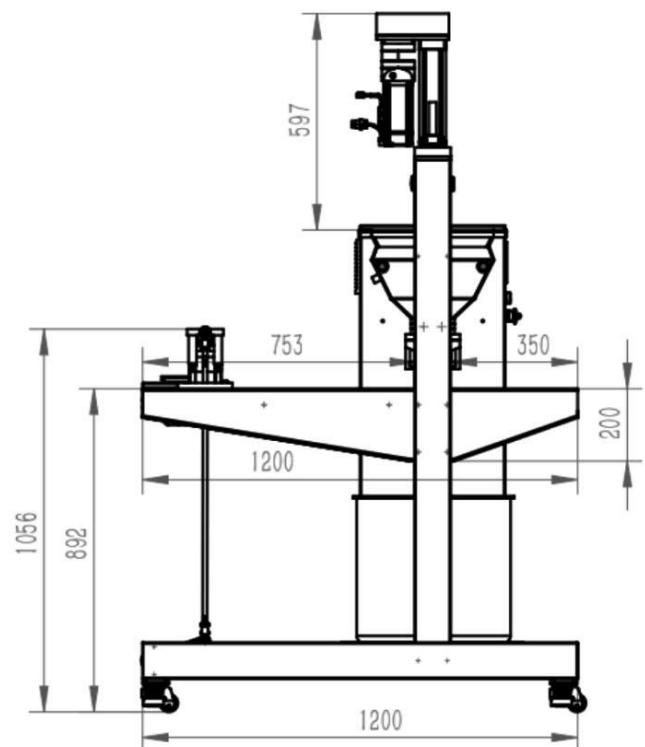
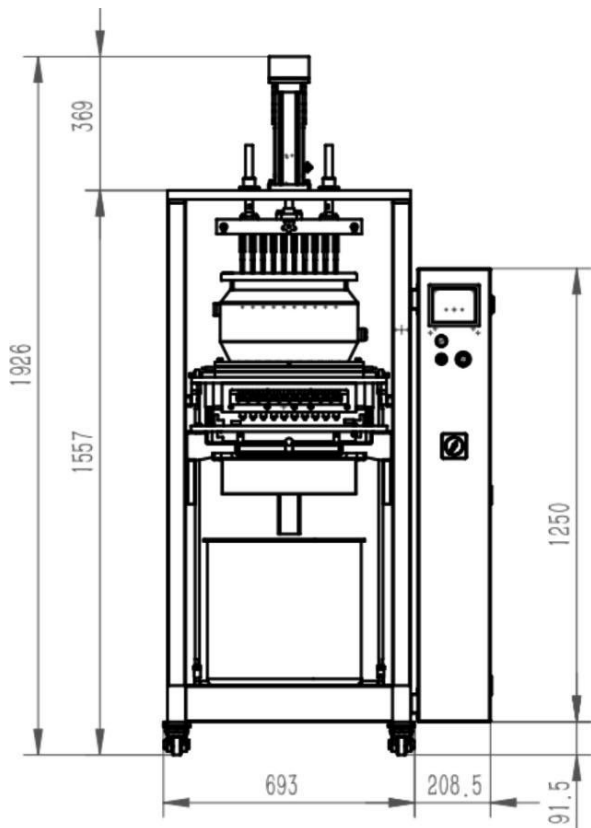
- 4g gummy
- 8 strokes per minute
- Finish within 20 mins
- $8 \text{ times} \times 20 \text{ mins} \times 20 \text{ cavity} = 3200 \text{ Unit}$
- $3200 \text{ gummies} \times 4\text{g} = 12\text{kg}$
- 6000-10000 gummies per hour





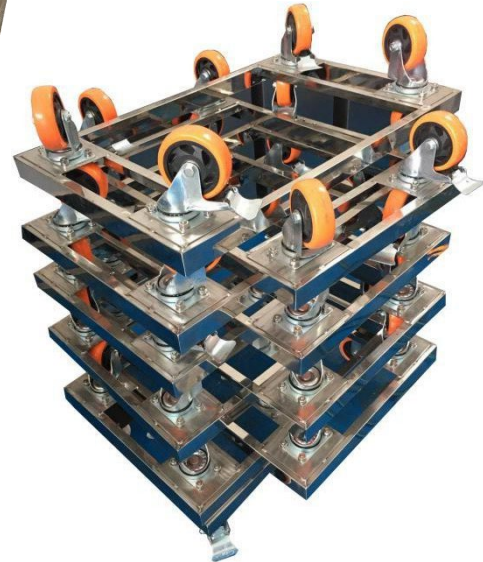
# DD-20

## R&D Gummy Machine



Technical Data	DD-20
<b>Capacity</b>	6,000-10,000 gummies/hour
<b>Depositing speed</b>	7-10 times /min
<b>Power supply</b>	220V 60HZ 1pH 5KW
<b>Hopper Size</b>	25L
<b>Weight</b>	300 kgs
<b>Dimension</b>	902X1200X1926 mm
<b>Gummy weight</b>	1-7g(Customize for other weight)

# Auxiliary Equipment Drying Trays & Dolly



## Drying Trays & Dolly

Plastic Reinforced Trays. Load Gummy 2.5-3kg/tray

Mesh Bottom and Side for Even Drying

Food grade, meet FDA standard

Smooth Finish for Ease of Cleaning

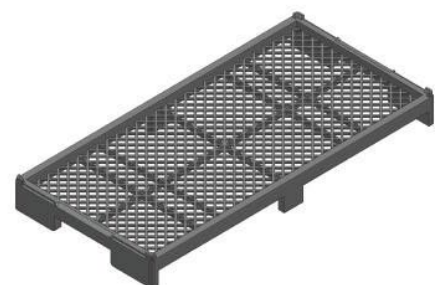
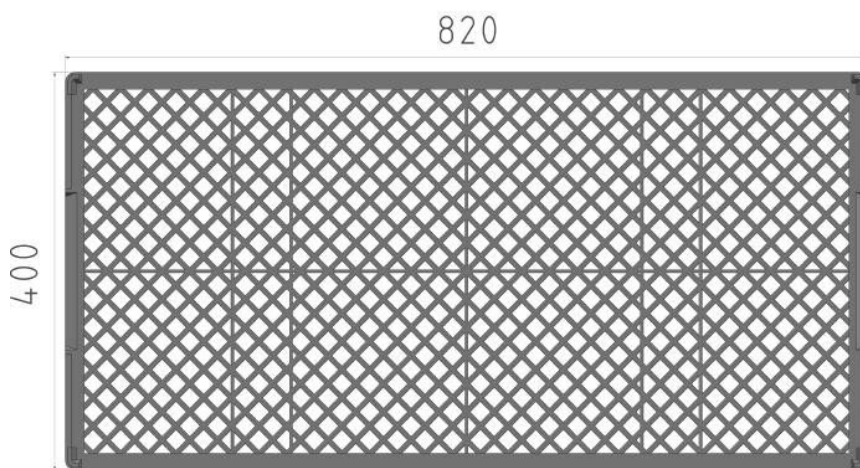
Drying Tray Dolly

Stack up to 50 Levels

Stainless Steel Construction



# Auxiliary Equipment Drying Trays & Dolly





# Auxiliary Equipment Drying Trays & Dolly

